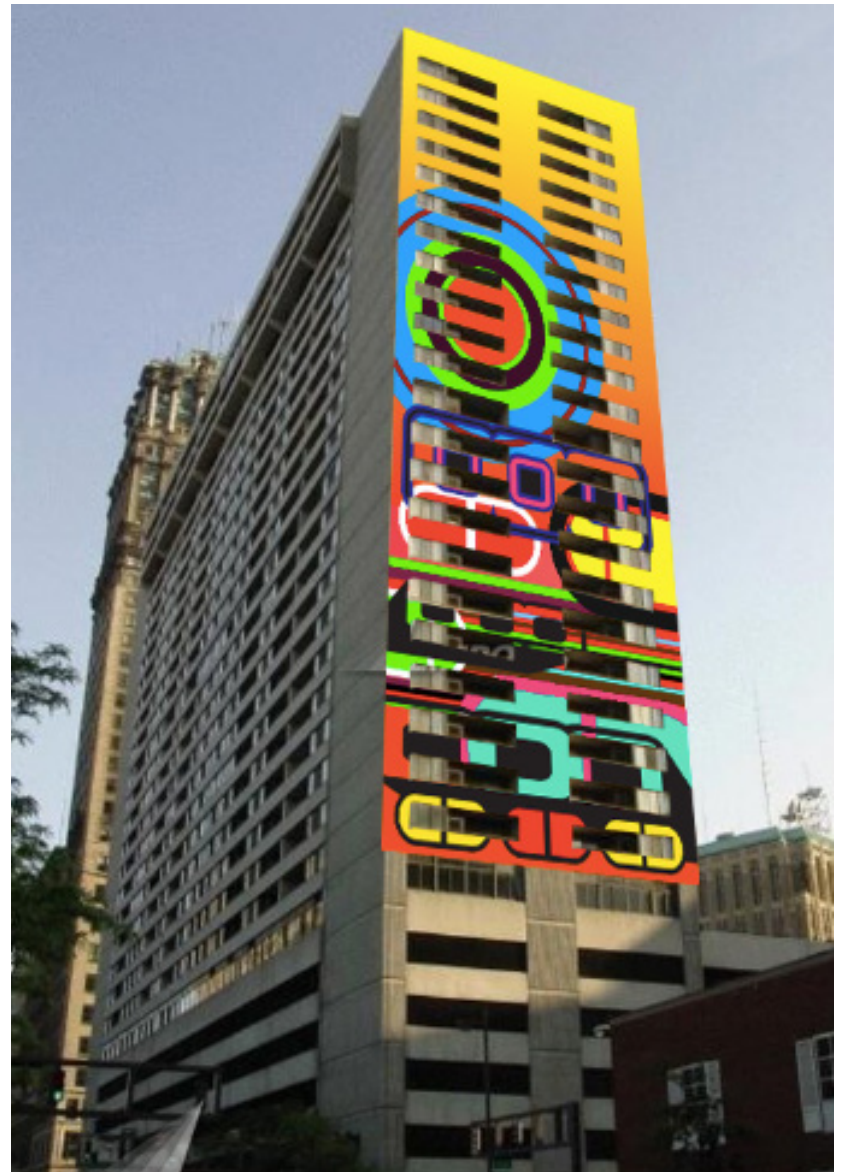
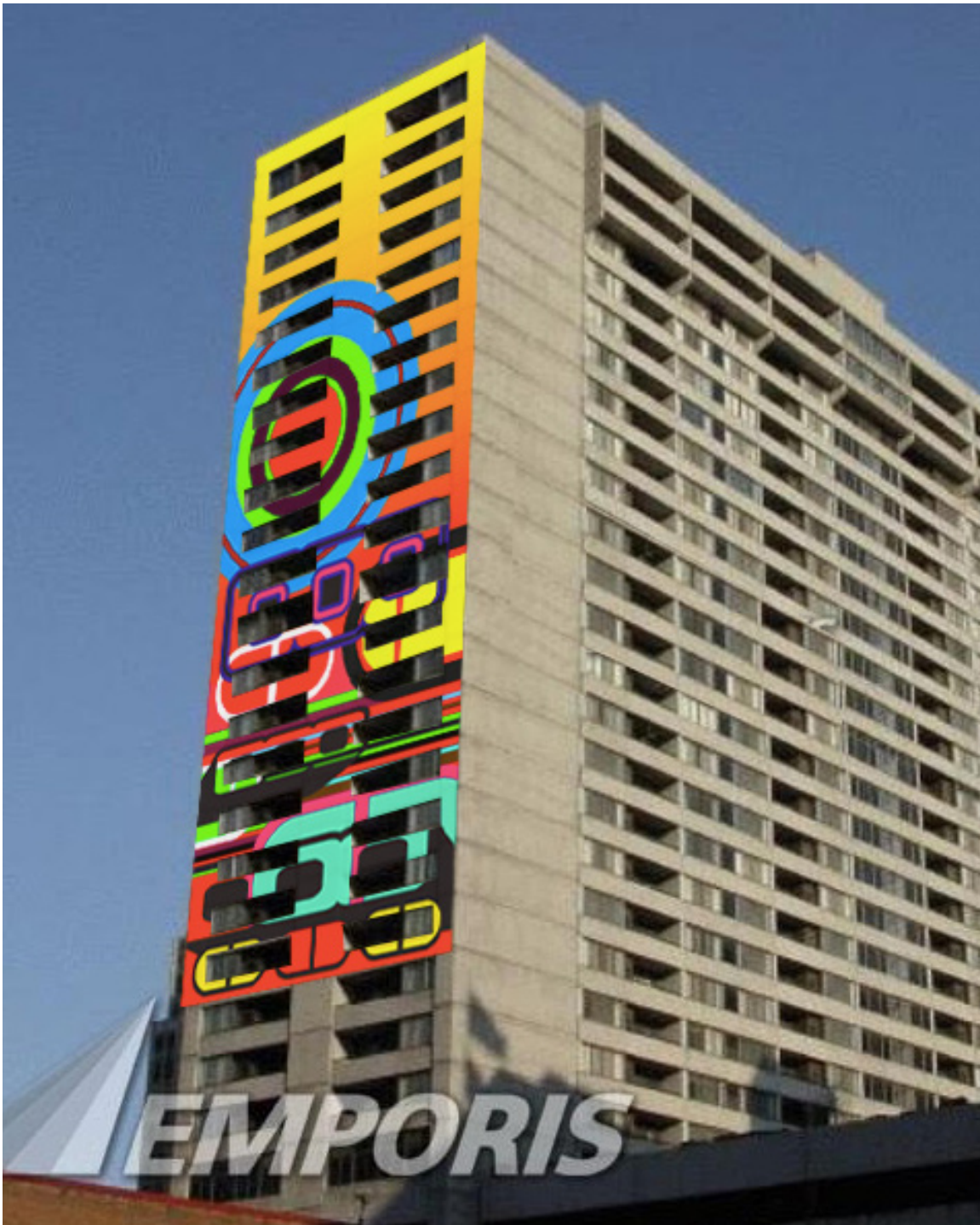


City Club Apartments: *RISE* by Beverly Fishman

“The mural’s design is inspired by my interest in Detroit as a center of cultural and industrial innovation. Machined forms collide with colors that evoke both natural and electronic lighting. The mural’s rhythmic repetitions, designed to achieve a counterpoint with the building’s horizontal balconies, are inspired by the techno pulse of the city’s electronic music scene--as well as the echo of its assembly lines.”

- Beverly Fishman



BEVERLY FISHMAN

Beverly Fishman is Artist-in-Residence and Head of the Painting Department at the Cranbrook Academy of Art. She received her MFA degree from Yale University in 1980. Fishman presents research that stems from an evolving investigation over 20 years on the topics of science, imagery and the advertising of pharmaceutical industries. The artist uses hue and texture along with intense color to cause optical confusion in her viewer, and reliefs from her Big Pharma series leave a hovering glow on the gallery wall. Her work has been included in many thematic exhibitions addressing abstraction, technology, medicine, and the body.

Fishman's exhibitions include those with the American Academy of Arts and Letters, the Columbus Museum of Art, the Boulder Museum of Contemporary Art, the Eli and Edythe Broad Art Museum, and the Toledo Museum of Art. Her work may be found in more than two dozen museum and corporate collections, including: the Eli and Edythe Broad Art Museum at Michigan State University; the Miami Art Museum, Nerman Museum of Contemporary Art; the Detroit Institute of Arts; Cranbrook Art Museum; and the United Nations Embassy in Istanbul, Turkey, among others.

B. 1955 Philadelphia, PA, lives & works in Bloomfield Hills, MI.

